

**5 Barton Mews  
Wimbledon, SW19 8LQ**

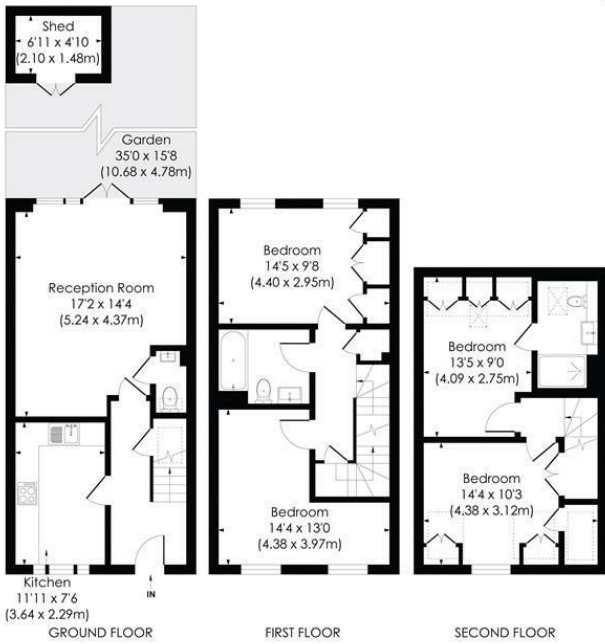
**Offers In Excess Of £895,000 Freehold**



**Set within a new build secure gated development on Effra Road (Built circa 2016,) in the South Park Gardens Area of Wimbledon this stylish modern house offers over 1200 Sq Ft of internal space over three floors, comprising: four bedrooms, two luxurious bathrooms, modern kitchen, large lounge/family room opening to a generous rear garden. The enclosed gated forecourt provides a secure and secluded environment, off road parking and secure bicycle storage, situated within close proximity to highly sought after local schools and excellent commuter routes.**

**BARTON MEWS, SW19**

Approx. Gross Internal Floor Area  
**1204 Sq. ft/111.86 Sq. m**



Energy Efficiency Rating		Current	Potential
Very energy efficient - lower running costs			
(92 plus)	A	90	90
(81-91)	B		
(69-80)	C		
(55-68)	D		
(39-54)	E		
(21-38)	F		
(1-20)	G		
Not energy efficient - higher running costs			
England & Wales		EU Directive 2002/91/EC	



This floor plan has been prepared for the purpose of illustration only in accordance with the latest RICS code of measuring practice and is not to scale. All measurements and areas are approximate and whilst every effort has been made to ensure the accuracy of the plan contained here, no responsibility is taken for any error, omission or misstatement.

- South Park Gardens Area
- New Build House (circa 2016)
- Secluded and Secure Gated Development
- Four Bedrooms and Two Luxury Bathrooms
- Allocated Secure Parking & Bicycle Storage
- Modern fitted kitchen
- Maintenance Charge - £877.43 per annum.
- Annual Fixed Rent - £400.00
- EPC Rating B

**For Free Mortgage Quote and Best Mortgage Rates, call an Ellisons Mortgage Advisor on 020 8944 9494**